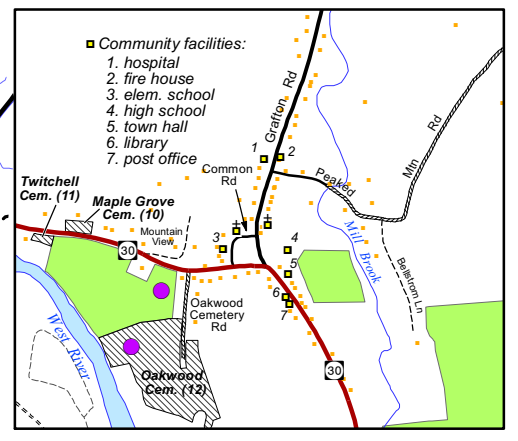
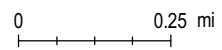
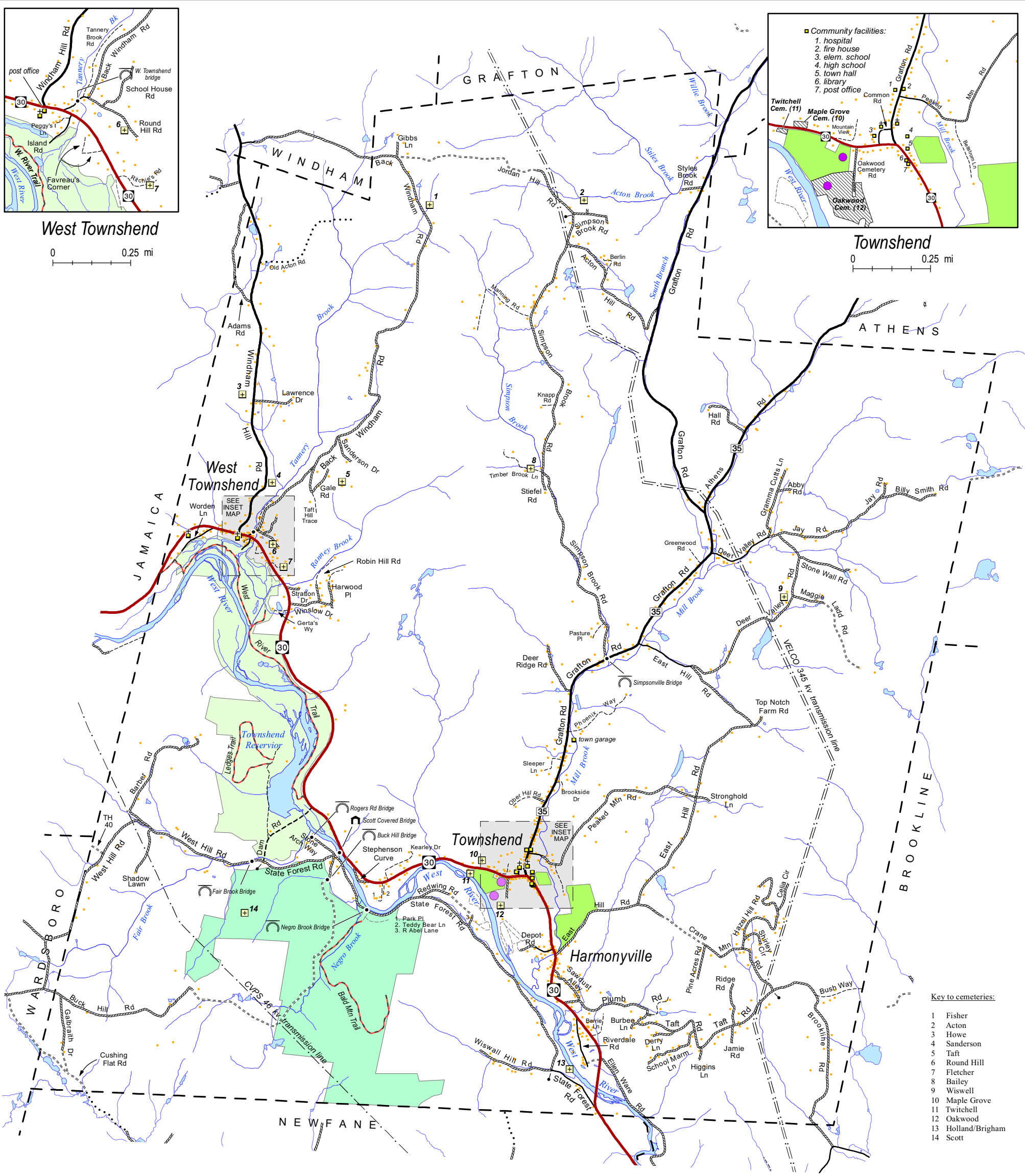
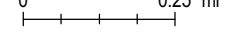


West Townshend



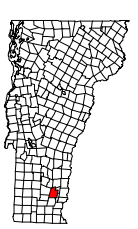
Townshend



- Key to cemeteries:
- 1 Fisher
 - 2 Acton
 - 3 Howe
 - 4 Sanderson
 - 5 Taft
 - 6 Round Hill
 - 7 Fletcher
 - 8 Bailey
 - 9 Wiswell
 - 10 Maple Grove
 - 11 Twitchell
 - 12 Oakwood
 - 13 Holland/Brigham
 - 14 Scott

Existing Conditions - Transportation, Utilities, and Community Facilities

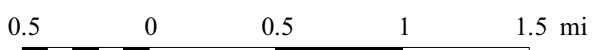
Town of Townshend, Vt.
November 2016



- Historic bridge: covered; stone arch
- Public cemetery, general location
- Public cemetery - extent
- Recreational trail
- Church
- Community facility
- Electric transmission line
- Structure
- Large capacity septic disposal field
- Federal land
- State land
- Town land
- State highway
- Class 2 town highway, paved
- Class 3 town highway, paved
- Class 3 town highway, unpaved
- Class 4 town highway
- Legal Trail
- Named private road
- Other roads
- Stream
- River or pond
- Symbol denotes change in road name

Data sources:

- Highway data are from Vt. Agency of Transportation sources (VGIS data layer RDSnmmn). Data were updated by Windham Regional Commission in 2006, 2009, and 2013 using information provided by the Town of Townshend, data from Vermont's Enhanced 911 Board, and Vermont digital orthophotos.
- Federal, state, and town lands were extracted from Townshend's 1:5000 digital parcel coverage.
- Building locations were captured using Global Positioning System technology by microDATA, St. Johnsbury, VT and the Vermont Enhanced 9-1-1 Board and are extracted from the VGIS data layer ESITE. Data are current to 2016.
- Electric transmission lines are taken from VGIS ELTRN data layer and were digitized from 1:5000 orthophotos by Greenhome & O'Mara Inc., edited by WRC.
- Community facilities were identified by the Townshend Planning Commission. Locations were determined by WRC using 1:5000 orthophotos, E911 buildings data, and Townshend's digital parcel coverage.



town map scale 1:48,000

Note: The maps of this Plan are key to understanding the vision of the Plan in the same manner as the Plan's policies; the maps and policies should be used in concert with each other.
- This map should be used for planning purposes and general reference only.